



Real Time Messaging System Solutions



BlueSky Wireless specialise in the provision of middleware solutions to unify communications between equipment and people predominantly messaging both textually and vocally.

Put simply our solutions connect equipment and processes to people thereby, improving the communications, service levels, safety and efficiencies within business.

At the heart and centre of our product offering is our flagship product - The BlueSky Application Gateway.

The basic function of the BlueSky Messaging System is to deliver text and announced messages to various end points. An end point can be a GSM, WiFi, Dect, Desk Phone or even a Vocera communications Badge, email recipient, Skype or Windows Live recipients and more.

- Scalable solution
- Web based message management
- Escalation group monitor
- Free open application interface
- Web based paging
- Web based virtual messaging
- Dect, Desk and WiFi phone modules available.
- Web based admin console

Fully Scalable from 5 user to 10,000 plus user

Application Gateway

What makes the BlueSky messaging system different is that it can integrate with existing systems to deliver a completely unified messaging solution (also see our additional modules brochure). The system can be scaled to fit any business from small 5 user systems to large 10,000 plus user systems.

Messaging Core Components

The following components go to make the core of the messaging system. They are common in all BlueSky Messaging Systems - The appropriate phone user interface will be installed except that prior to the delivery.

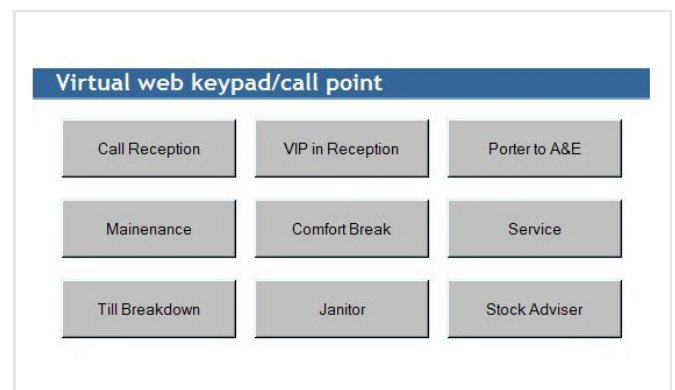
A screenshot of a web browser interface for sending a text message. The title is "Send a new text message". It includes a dropdown menu for "Send to Extension or Group" with a "Select Value" placeholder, a "Subject" text input field, a "Select Message Template" dropdown menu with a "Select Value" placeholder, a "Message type (priority)" dropdown menu with "STD" selected, and a large text area for "Enter message to send". There are checkboxes for "Extension" (unchecked) and "Contact" (checked). A "Send Message" button is at the bottom right.

Web Messenger - Paging

Users with access to the web browser can send messages to any handset on the system removing the need to have a separate paging system. As you can see from the screenshot - it is a very simple process.

Virtual Keypad/Call Point

With a single click users with access to the web browser can use the virtual keypad which can be used to send messages to any end point or group of endpoints on the system. E.G security alert, queue buster or comfort break. The messages are completely administrator configurable.



Fully Integrated Real Time Messaging Solutions



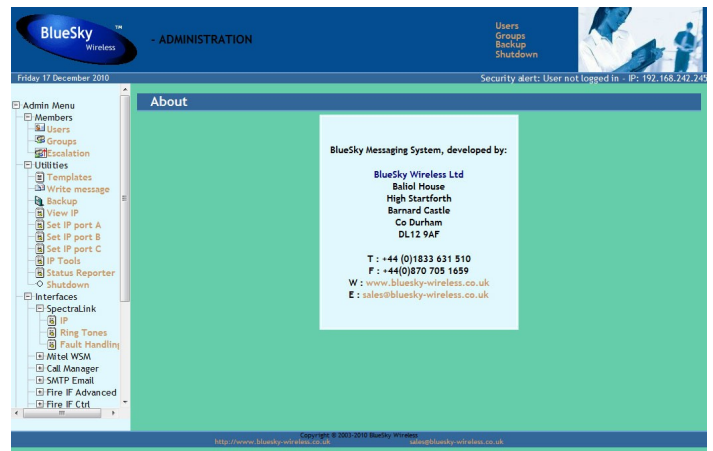
Web User Console

The web console is accessed via a web browser, it is where users can come to manage their own message inbox and sent items just like a web mail system. Standard users can manage their password, access help and view simple reports. Super users can do everything a standard user can do as well as manage users and simple groups.

Web Administration Console

Using a web browser an administrator can manage users, groups, and escalation sets. They can configure message templates, IP settings for the various Ethernet ports, use IP tools e.g. Ping and shut the systems down. Administrators can also manage the real world interface e.g. Fire alarms, WiFi telephones, email and more depending on what is installed on the system.

A comprehensive set of reports, graphs and export tools are available along with a complete set of online manuals



Parameter	Value
FTPAddr	<input type="text" value="192.168.1.99"/>
FTPUser	<input type="text" value="install"/>
FTPPassword	<input type="password" value="*****"/>
<input type="button" value="Update"/>	

Web Backup and restore console

Accessed via a web browser the backup and restore console allows administrators to backup and restore the system via an FTP server.

WiFi Phone Module

The WiFi phone module interfaces with various WiFi VoIP handsets on the market and enables the phone to be used to receive and deliver messages.

Dect Phone Module

The Dect phone module interfaces with various Dect handsets on the market and enables the phone to be used to receive and deliver messages.



Scalable Integrated Messaging Solutions In A Box

BlueSky Wireless is becoming the choice for organisations and businesses worldwide.

Desk Phone Module

The Desk phone module interfaces with various Desk VoIP handsets on the market and enables the phone to be used to generate messages.



BlueSky Application Interface

The Open Interface provides a simple TCP/IP link for connection to additional systems maintained by the end user or a third party. This module enables other systems to utilise the messaging core to transmit and receive messages. A single client license for the BlueSky Open Interface is available free of charge.

Level	Time	Msg Type	Req'd responses	Escalation sets notes
1	30	STD	1	11.1
uS(1010)				
2	30	VIP	1	11.2
uS(1011)				
3	15	STD	1	
Support(EN000062)				

Name	Number	Description	Last Update
Environmental	E5000001	Environmental Alarms	13 May 2010 10:00

Escalation monitor

Escalation groups guarantee a response, if all the recipients in the first escalation group reject the message then it is immediately escalated to the next group of handsets or by email or many other end points to a central administrator.

Message Filter

The message filter module can be programmed to block rapidly recurring alarm and event messages to reduce alarm "snow" and false positives. Messages that are blocked are temporarily stored in a trash folder which is accessible to super users and administrator. The trash message folder is cleared of all messages older than one month.

Lost And Found Monitor

When an endpoint is unavailable the lost and found monitor will repeatedly attempt to contact the missing endpoint until it is either found or the system times out.

There are a large number of additional modules, that when requested are simply installed, configured and switched on remotely. See our additional modules sales brochure or website for more information on these or alternatively please call us directly on +44 (0) 1833 631 510

Accredited reseller:



Specification subject to change without notice
All trademarks are acknowledged to their respective owners

Copyright © 2010 BlueSky Wireless Ltd

